



Bartholomew Square, London, , E1 5PH

£625,000

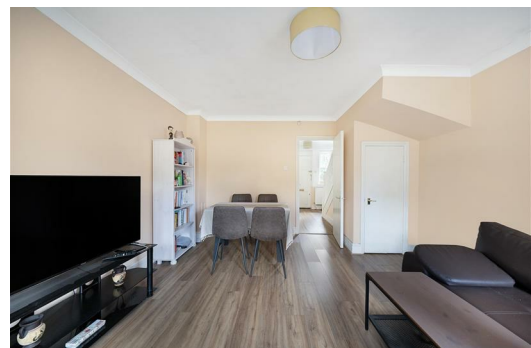
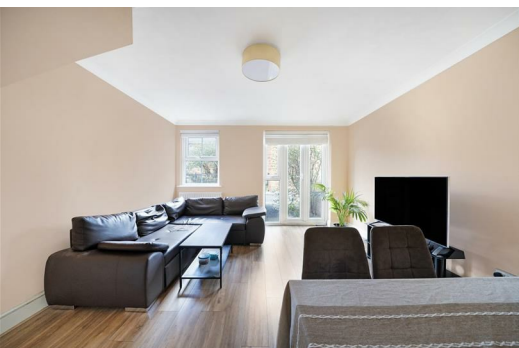
Guide Price £625,000 - £650,000 Elms Estates are absolutely delighted to be able to offer to the market for sale this spacious Two Bedroom House with its very own private parking space.

Bartholomew Square is superbly located with both Bethnal Green (underground) and Bethnal Green (overground) stations being moments away, as well as Whitechapel Station (District and Hammersmith & City lines) being close by.

In addition to the fantastic transport links, Bartholomew Square is situated just up the road from Whitechapel's famous Street Market with easy access to local amenities, with Bethnal Green Gardens, Sainsbury's, York Hall fitness centre and swimming pool, and a variety of restaurants and pubs just a few minutes' walk away.

Nestled within a secure gated development, this well-presented two-bedroom terraced house offers a fantastic opportunity for comfortable living. The property benefits from off-street parking and access to beautifully maintained communal gardens, providing a peaceful retreat.

Internally the property features a spacious layout, including a bright living area, a modern kitchen, and two well-proportioned bedrooms. The master bedroom boasts an en-suite shower room for added convenience.



Reception
16'0" x 13'1" (4.9 x 4.0)

Kitchen
10'2" x 6'10" (3.1 x 2.1)

Bedroom One
10'2" x 9'10" (3.1 x 3.0)

En-Suite Shower

Bedroom Two
13'1" x 7'10" (4.0 x 2.4)

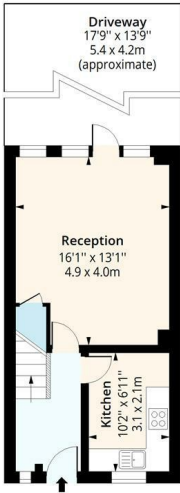
Bathroom

Material Information
Tenure: Share of Freehold
Length Of Lease: Approx 161 Years remaining
Annual Service Charge: Approx £1,662.20 Per year
Council Tax Band: D



Bartholomew Square, E1

Approx. Gross Internal Area 706 Sq Ft - 65.59 Sq M



Ground Floor

Floor Area 353 Sq Ft - 32.79 Sq M



First Floor

Floor Area 353 Sq Ft - 32.79 Sq M



Measured according to RICS IPMS2. Floor plan is for illustrative purposes only and is not to scale. Every attempt has been made to ensure the accuracy of the floor plan shown, however all measurements, fixtures, fittings and data shown are an approximate interpretation for illustrative purposes only. 1 sq m = 10.76 sq feet.

lpaplus.com



Date: 28/2/2025

Energy Efficiency Rating		Current	Potential
Very energy efficient - lower running costs			
(92 plus) A			89
(81-91) B			
(69-80) C			
(55-68) D			
(39-54) E			
(21-38) F			
(1-20) G			
Not energy efficient - higher running costs			
England & Wales		EU Directive 2002/91/EC	

Environmental Impact (CO ₂) Rating		Current	Potential
Very environmentally friendly - lower CO ₂ emissions			
(92 plus) A			
(81-91) B			
(69-80) C			
(55-68) D			
(39-54) E			
(21-38) F			
(1-20) G			
Not environmentally friendly - higher CO ₂ emissions			
England & Wales		EU Directive 2002/91/EC	